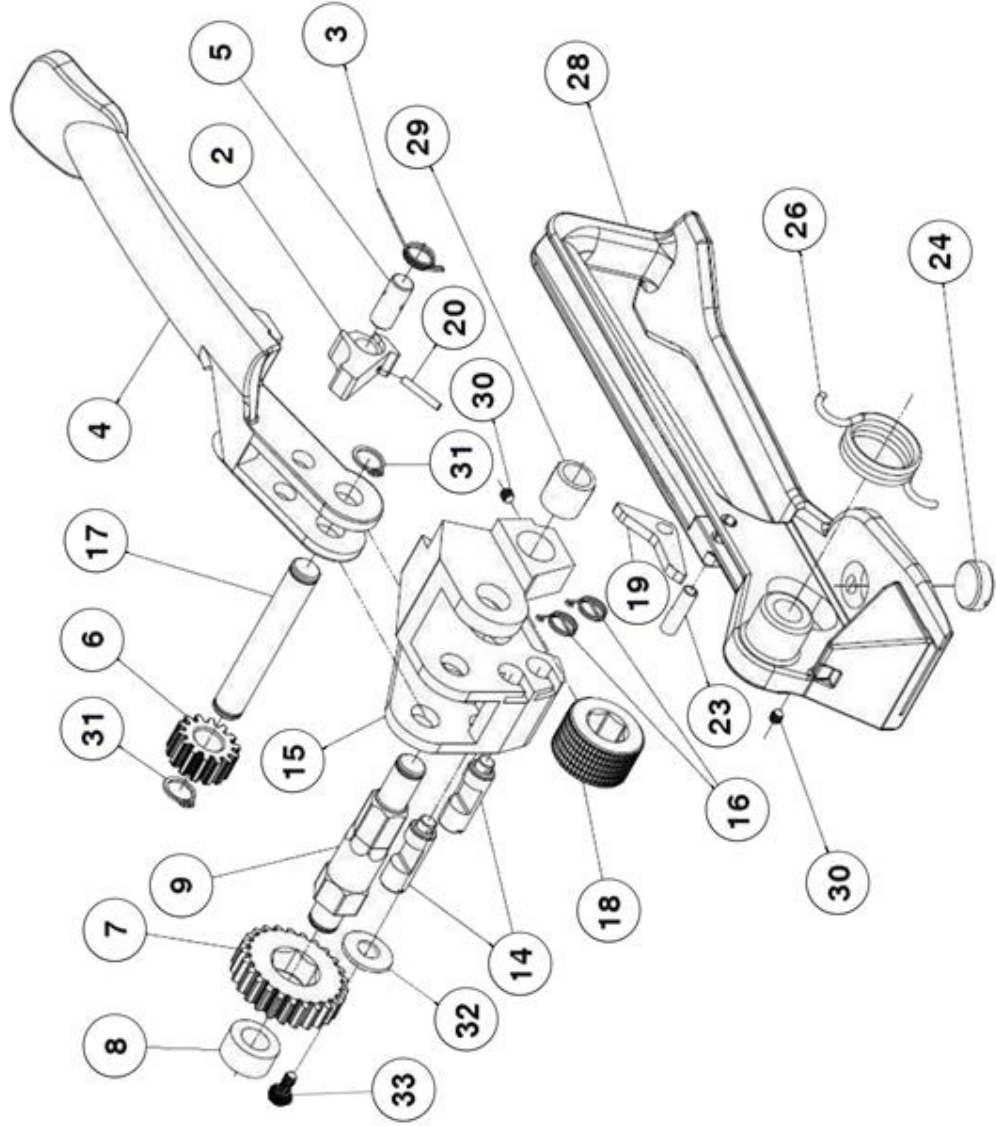


EP-1600 PARTS LIST

ITEM	QTY	PART #	DESCRIPTION
2	1	E1600-02	Drive Pawl
3	1	E1600-03	Spring Drive Pawl
4	1	E1600-04	Tension Handle
5	1	E1600-05	Pawl Pin
6	1	E1600-06	Pinion Gear
7	1	E1600-07	Tension Gear
8	1	E1600-08	Bushing
9	1	E1600-09	Feedwheel Shaft
14	2	E1600-14	Hold Pawl
15	1	E1600-15	Gear Housing
16	2	E1600-16	Holding Pawl Spring
17	1	E1600-17	Pivot Pin
18	1	E1600-18	Feedwheel
19	1	E1600-19	Lift Arm
20	1	E1600-20	Spiral Pin
23	1	E1600-23	Base Roll Pin
24	1	E1600-24	Wear Plug
26	1	E1600-26	Base Spring
28	1	E1600-28	Base
29	1	E1600-29	Gear Housing Bushing
30	1	E1600-30	Set Screw
31	2	E1600-31	Retaining Ring
32	1	E1600-32	Gear Housing Washer
33	1	E1600-33	Gear Housing Screw



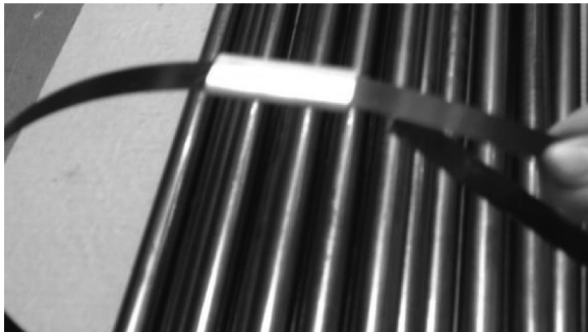
# EP-1600 OPERATING INSTRUCTIONS

## \*\*\*Safety Warnings\*\*\*

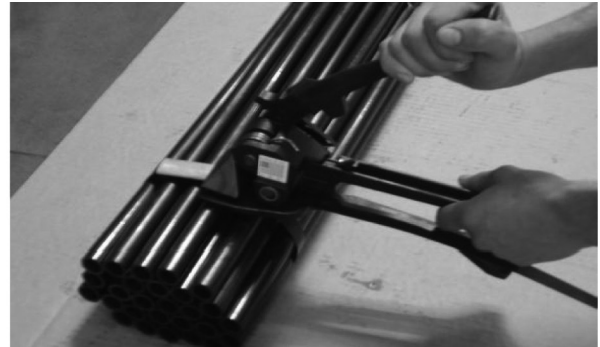
- Before using the EP-1600 please follow all safety precautions. (Ex: Safety Glasses, Gloves etc.)
- Inspect tool for worn or broken parts before operating.
- Only trained operators should use this tool. Watch fingers and keep them away from the front of the tool or by areas that can pinch or cut.
- The EP-1600 is recommended for use with only 5/8" x .023 through 1-1/4" x .035 gauge Steel Strap.
- DO NOT over tension the strap as breakage may occur. Unsafe use of the EP-1600 may result in blindness, severe laceration, amputation or death.

## \*\*\*Operating Instructions\*\*\*

1. Pull strapping off cart and wrap around load.
2. Push seal on the strap with the flat side up.
3. Slide the end of the strap through the seal and underneath the other side of the strap.
4. Bend the end of the strap back to keep seal in place.



5. Squeeze down the tension handle of the EP-1600 against the base and put the top strap against the inside edge of the slot under the nose of the tool.
6. Release the handle to lock the strap in place.
7. Tighten the strap by raising and lowering the tension handle.



8. Use the appropriate Heavy Duty Sealer to seal the pusher in place.
9. Tilt the nose of the tool all the way forward and rock backward several times in order to break the top strap.

