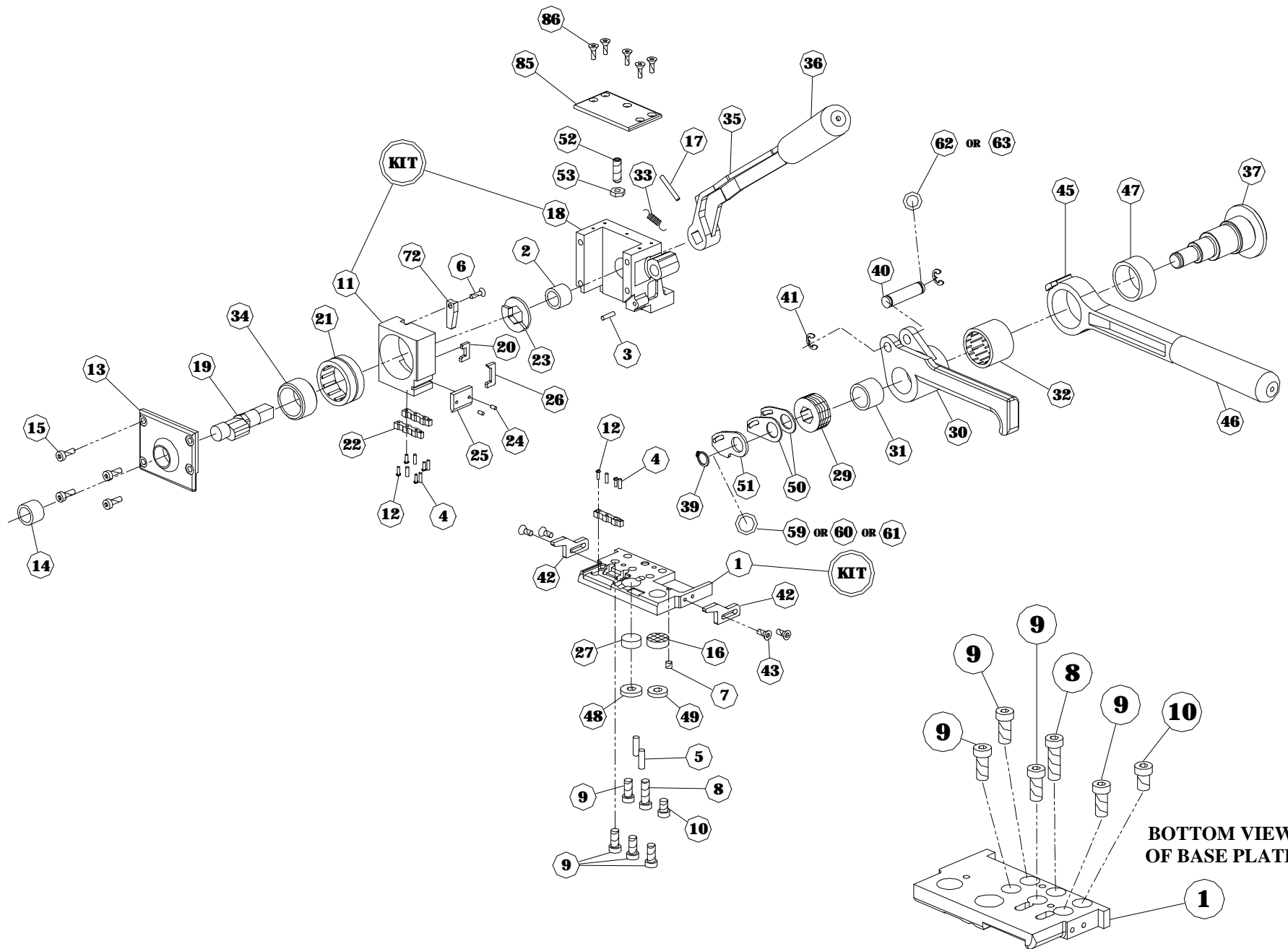


# MIP-4800 STEEL STRAP SEALLESS COMBINATION TOOL



## MIP-4800 STEEL STRAP SEALLESS COMBINATION TOOL

<u>KEY#</u>	<u>DESCRIPTION</u>	<u>QTY</u>	<u>PART#</u>
<i>KIT (1)</i>	<i>Base Plate</i>	<i>1</i>	<i>M4800-KIT</i>
2	Bearing (Housing)	1	M4800-2
3	Dowel Pin (Strap Guide)	1	M4800-3
• 4	Dowel Pin (Jaws)	6	M4800-4
5	Dowel Pin (Base-Housing)	2	M4800-5
6	Cap Screw (Lifter Pad)	1	M4800-6
7	Set Screw	1	M4800-7
• 8	Screw – Long Base	1	M4800-8
• 9	Screw – Medium Base	4	M4800-9
• 10	Screw – Short Base	1	M4800-10
<i>KIT (11)</i>	<i>Upper Tool</i>	<i>1</i>	<i>M4800-KIT</i>
• 12	Jaw Screw	6	M4800-12
13	Front Cover	1	M4800-13
14	Bearing (Front Cover)	1	M4800-14
15	Front Cover Screw	4	M4800-15
16	Clutch Plug	1	M4800-16
17	Spirol Pin	1	M4800-17
<i>KIT (18)</i>	<i>Housing</i>	<i>1</i>	<i>M4800-KIT</i>
19	Eccentric Shaft	1	M4800-19
20	Lifter – Right	1	M4800-20
21	Bearing (Upper Tool)	1	M4800-21
• 22	Upper / Lower Jaw	3	M4800-22
23	Lifter Crank	1	M4800-23
• 24	Dowel Pin (Cutter Knife)	2	M4800-24
• 25	Cutting Knife	1	M4800-25
26	Lifter – Left	1	M4800-26
27	Knife Bed	1	M4800-27
• 29	Tension Wheel	1	M4800-29
• 30	Rocker	1	M4800-30
• 31	Bearing (Rocker)	1	M4800-31

<u>KEY#</u>	<u>DESCRIPTION</u>	<u>QTY</u>	<u>PART#</u>
• 32	Roller Clutch (Rocker)	1	M4800-32
• 33	Tension Spring	1	M4800-33
34	Bearing Inner Ring	1	M4800-34
35	Cutting Lever	1	M4800-35
36	Cutter Lever Grip	1	M4800-36
37	Transport Shaft	1	M4800-37
39	Retaining Ring (Transport Shaft)	1	M4800-39
40	Grooved Rocker Pin	1	M4800-40
41	E-Clip (Grooved Rocker Pin)	2	M4800-41
42	Left / Right Strap Guide	2	M4800-42
43	Left / Right Strap Guide Screw	4	M4800-43
45	Tension Lever	1	M4800-45
46	Tensioner Lever Grip	1	M4800-46
47	Bearing (Tension Lever)	1	M4800-47
48	Lock Plate (Knife Bed)	1	M4800-48
49	Lock Plate (Clutch Plug)	1	M4800-49
50	Spacer (Front Strap Guide)	2	M4800-50
51	Front Strap Guide	1	M4800-51
• 52	Depth Adjust Screw	1	M4800-52
53	Depth Adjust Jam Nut	1	M4800-53
59	Feedwheel Shim .010"	Variable	M4800-59
60	Feedwheel Shim .030"	Variable	M4800-60
61	Feedwheel Shim .015"	Variable	M4800-61
62	Rocker Shim .010"	Variable	M4800-62
63	Rocker Shim .025"	Variable	M4800-63
72	Lifter Pad	1	M4800-72
85	Top Cover	1	M4800-85
86	Top Cover Screw	5	M4800-86

***KIT sold only as assembled unit.***

***30X and 45X also available as assembled units.***

<u>ASSEMBLY#</u>	<u>DESCRIPTION</u>	<u>PARTS INCLUDED</u>	<u>QTY</u>	<u>PART#</u>
• 30X	Rocker Assembly	30, 31, 32	1	M4800-30X
45X	Tension Lever Assembly	45, 47	1	M4800-45X

**Reference part number when ordering.  
All parts are in metric sizes unless otherwise noted.**

**• Key wear part  
Read all operating & safety instructions.**